

Borough of Woodland Park

Bureau of Fire Prevention

MICHAEL J. MUCCIO
Fire Official



Passaic County, NJ
5 Brophy Lane
Woodland Park, NJ 07424
Office (973) 345-3899
Fax (973) 345-0639

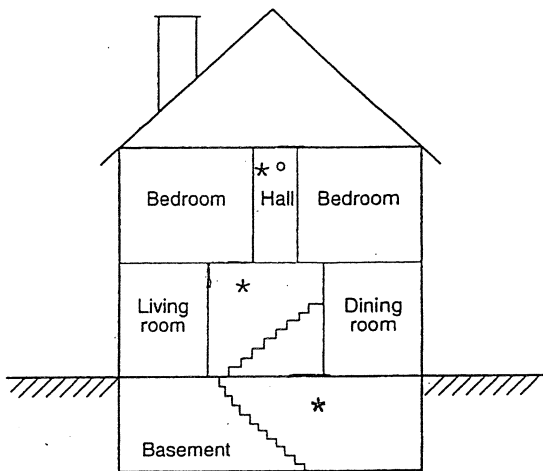
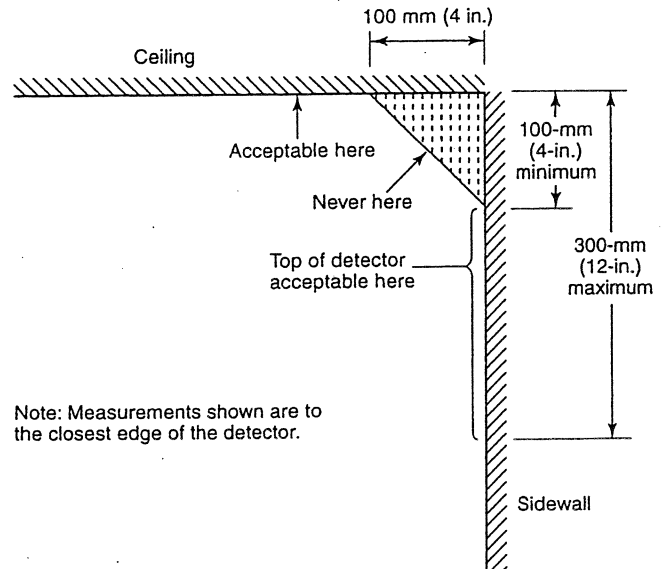


FIGURE A.11.8.3(c) A Smoke Detector Should be Located on each Story.

*-Smoke Detector



Note: Measurements shown are to the closest edge of the detector.

FIGURE A.11.8.3(d) Example of Proper Mounting for Detectors.

°-Carbon Monoxide Detector

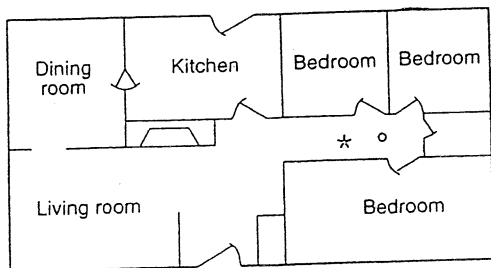


FIGURE A.11.8.3(a) A Smoke Detector Should be Located between the Sleeping Area and the Rest of the Dwelling Unit.

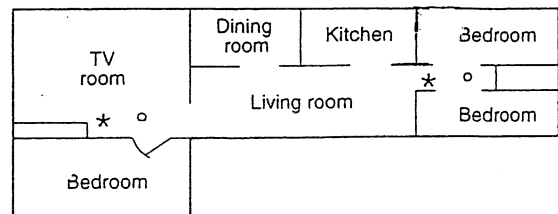


FIGURE A.11.8.3(b) In Dwelling Units with More than One Sleeping Area, a Smoke Detector Should be Provided to Protect each Sleeping Area